

Things to know

Trip types

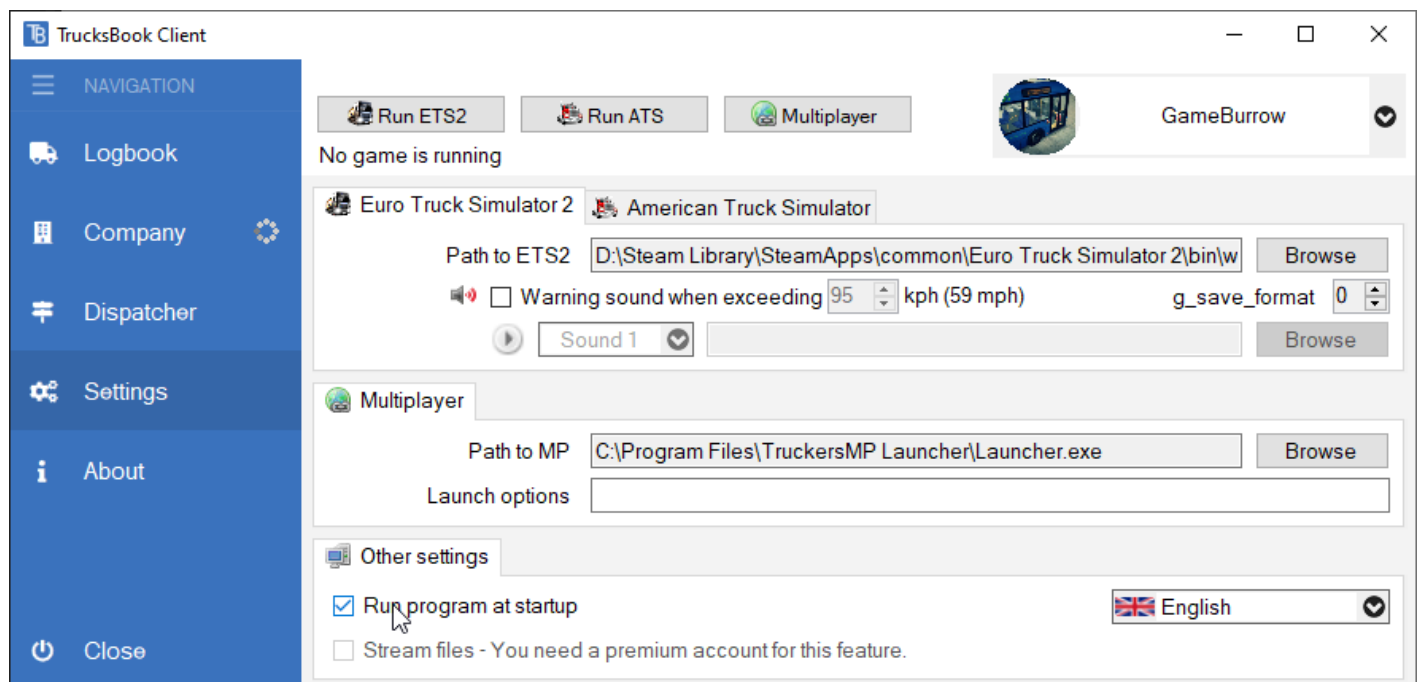
There are 2 kinds of trips in TrucksBook:

- **Real trips** - If you do not exceed the maximum speed of 100 km/h (62 mph) in ETS2 or 130 km/h (80 mph) in ATS during the delivery
- **Race trips** - If you go over the mentioned limits.

“ One more thing to note: If you go over 180 km/h in ETS 2 or 112mph in ATS, your trip won't log at all.

Client and tracking

“ Trucksbook Client need to run in order for it to track / log your trips so I recommend enabling option in **Settings** that it starts with Windows with option **Run program at startup**



First trip isn't logged

I've delivered my first job and all the values are not accurate or zero.

The first log from the program may not be entirely accurate, because the first job delivery is essentially calibration. If the values are inaccurate or absurd, try to take another job that should already be correct.

Revision #4

Created 28 October 2019 05:02:17 by Gameburrow

Updated 28 October 2019 11:51:37 by Gameburrow