

# Ikarus EAG 395

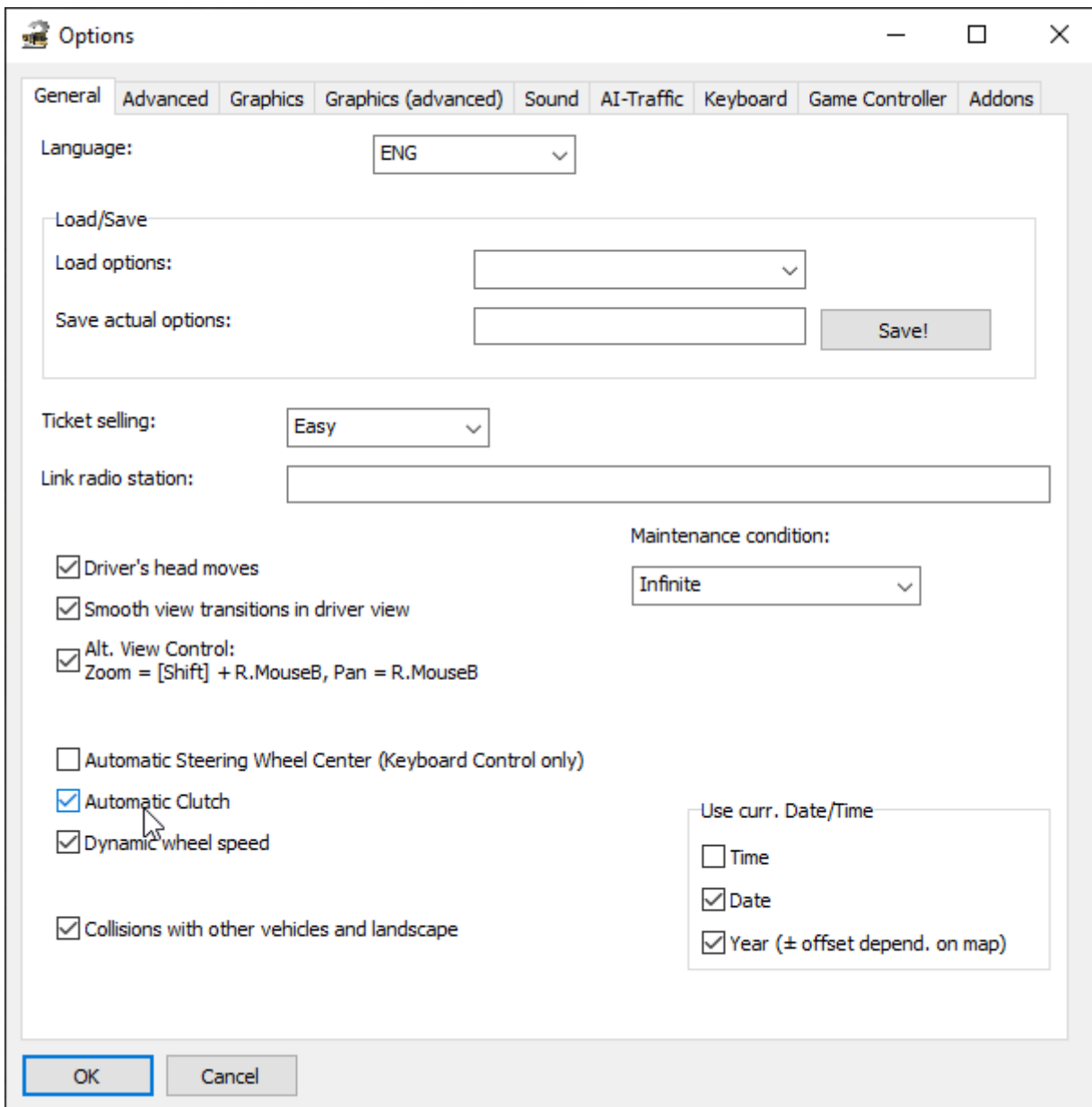
The bus was never fully released so there are few bugs, like:

- There is no ticket printer and cash desk (so make sure to have ticket selling on simple (with simple you can use keyboard shortcuts) or off).

## Dashboard buttons we've figured out



This is manual gearboxed bus. If you want to have simpler logic: just pressing gear keys, no clutch, enable following setting in OMSI:



By default, manual gear buttons in OMSI are:

N, R, 1, 2, 3, 4, 5 (numbers in the number row, not numpad), Tab is clutch if you didn't enable automatic clutch

---

Revision #7

Created 1 May 2020 21:52:47 by Gameburrow

Updated 2 May 2020 20:45:35 by Gameburrow